

# What you'll get for your money



- Police officer numbers will remain at their highest in a decade.



- Retaining 150 Police Community Support Officers.



- £4.2m safeguarded for grants and commissioning to support victims and prevent crime.



- Investment in prevention and early intervention activity to reduce crime and antisocial behaviour.



Nottinghamshire  
**ALERT**

Sign up for crime alerts  
[www.nottinghamshirealert.co.uk](http://www.nottinghamshirealert.co.uk)

To subscribe to my newsletter, scan the QR code, email us or visit our website.



NOTTINGHAMSHIRE  
POLICE & CRIME  
COMMISSIONER



## VALUE FOR MONEY POLICING

2023-24

"Protecting the vulnerable is more important now than ever, and my police funding plans for the next year will maintain officer numbers at the highest they've been in over a decade. This leaflet gives you more information about where our money comes from and how it will be spent."

*Caroline Henry*

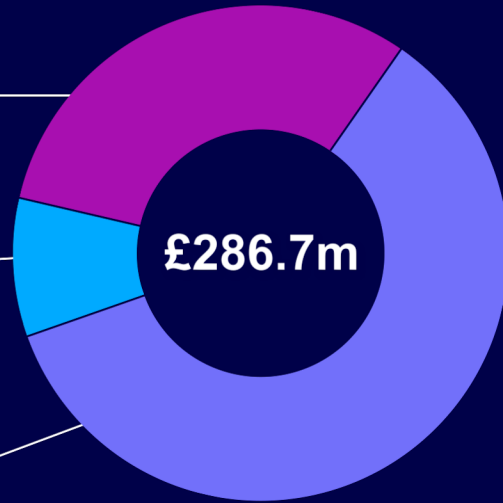
**Commissioner Caroline Henry**  
Nottinghamshire Police and Crime Commissioner



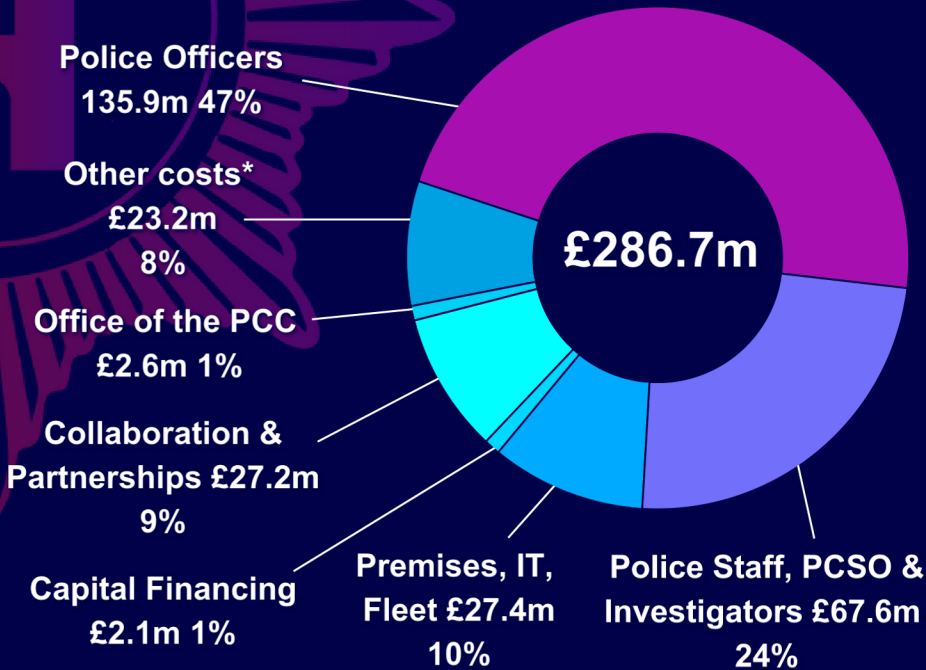
📞 Call us on 0115 844 5998  
@ officepcc@notts.police.uk  
🌐 [www.nottinghamshire.pcc.police.uk](http://www.nottinghamshire.pcc.police.uk)

# Cost of policing 2023-24

## Income



## Expenditure

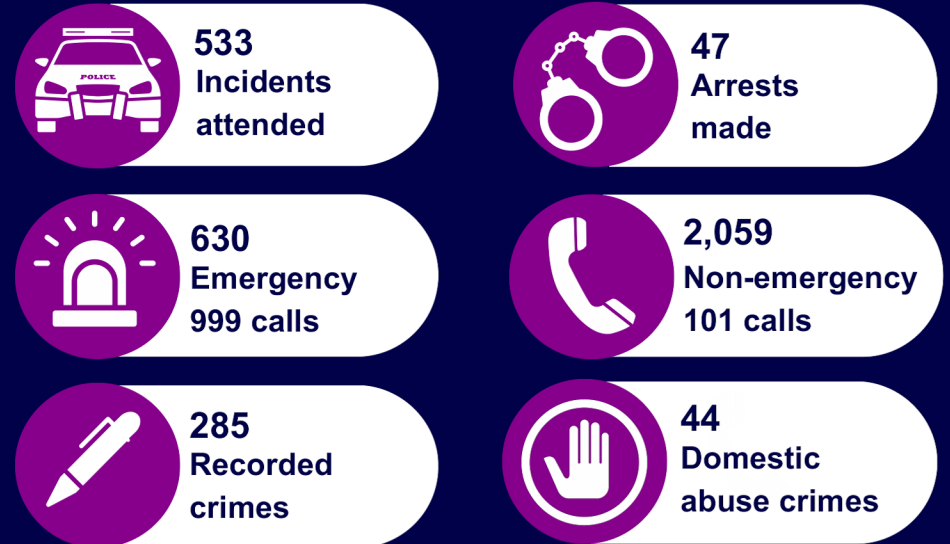


\*Including PCC Grants & Commissioning

# Police council tax for 2023-24

Property Band	Cost last year	Increase this year	Cost this year	Percentage Increase	Increase per week
A	£169.50	£9.96	£179.46	5.9%	19p
B	£197.75	£11.62	£209.37	5.9%	22p
C	£226.00	£13.28	£239.28	5.9%	26p
D	£254.25	£14.94	£269.19	5.9%	29p
E	£310.75	£18.26	£329.01	5.9%	35p
F	£367.25	£21.58	£388.83	5.9%	42p
G	£423.75	£24.90	£448.65	5.9%	48p
H	£508.50	£29.88	£538.38	5.9%	57p

# 24hrs in Nottinghamshire Police\*\*



\*\*An average day in 2022 calendar year.