

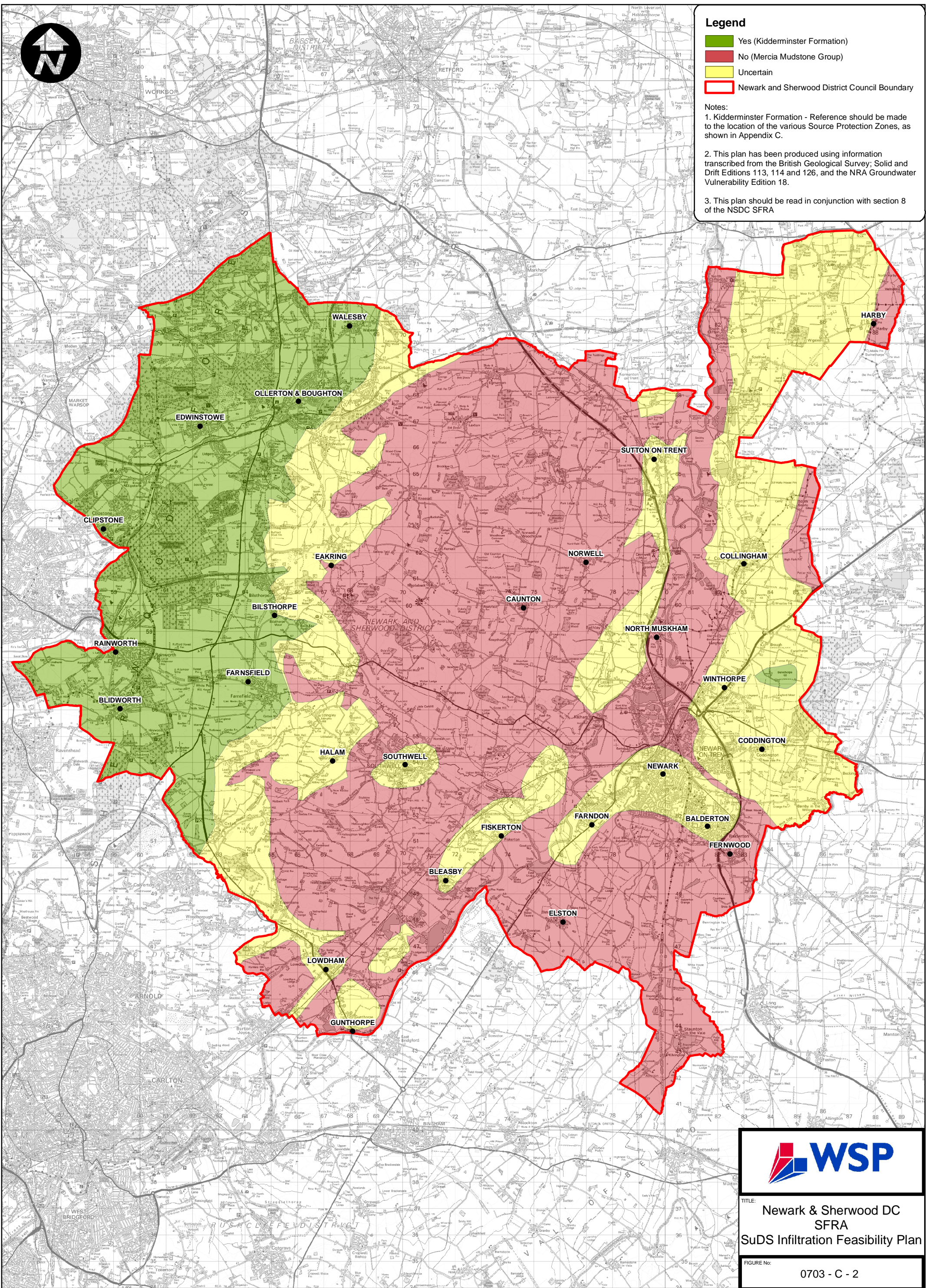


Legend

- Yes (Kidderminster Formation)
- No (Mercia Mudstone Group)
- Uncertain
- Newark and Sherwood District Council Boundary

Notes:

1. Kidderminster Formation - Reference should be made to the location of the various Source Protection Zones, as shown in Appendix C.
2. This plan has been produced using information transcribed from the British Geological Survey; Solid and Drift Editions 113, 114 and 126, and the NRA Groundwater Vulnerability Edition 18.
3. This plan should be read in conjunction with section 8 of the NSDC SFRA



TITLE:
Newark & Sherwood DC
SFRA
SuDS Infiltration Feasibility Plan

FIGURE No:
0703 - C - 2

